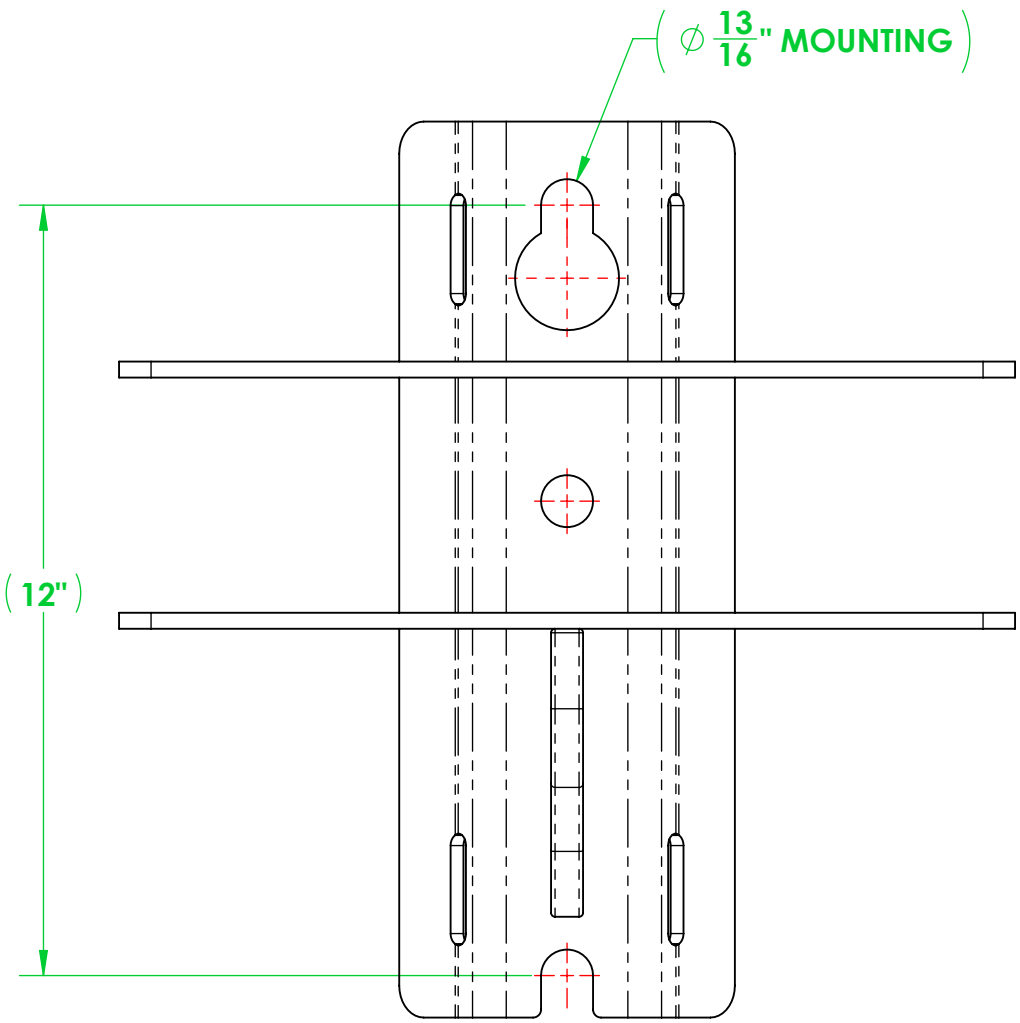
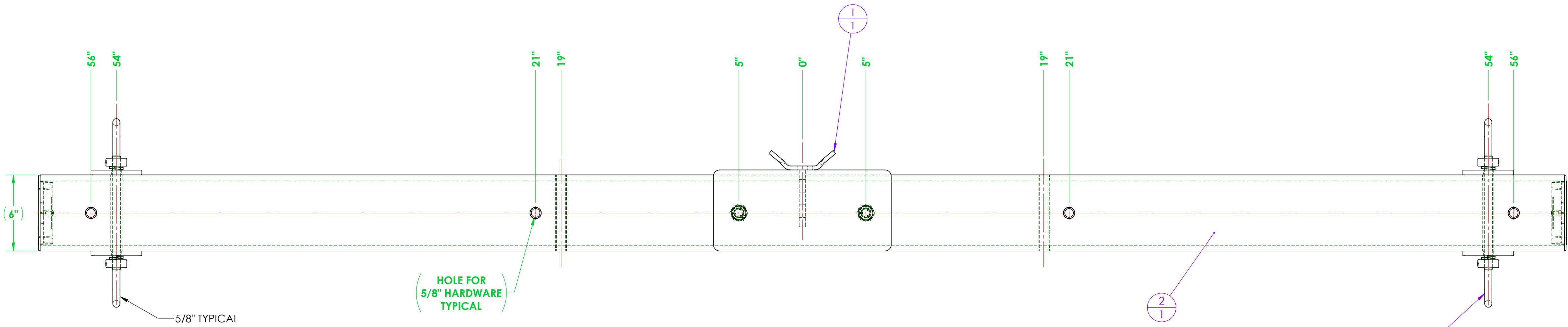
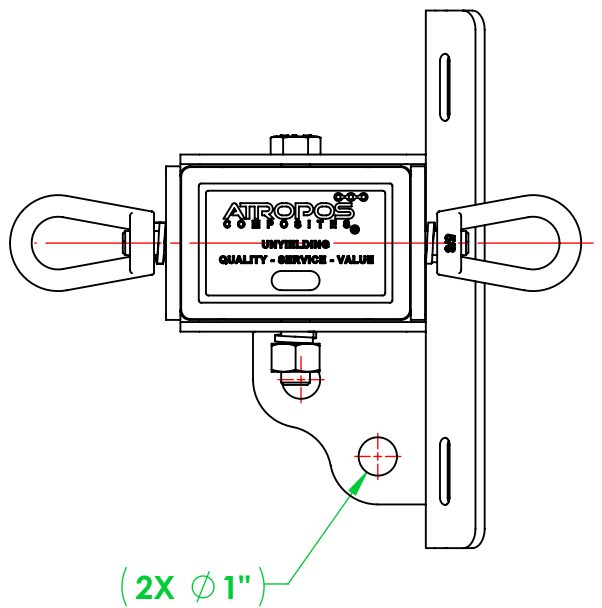
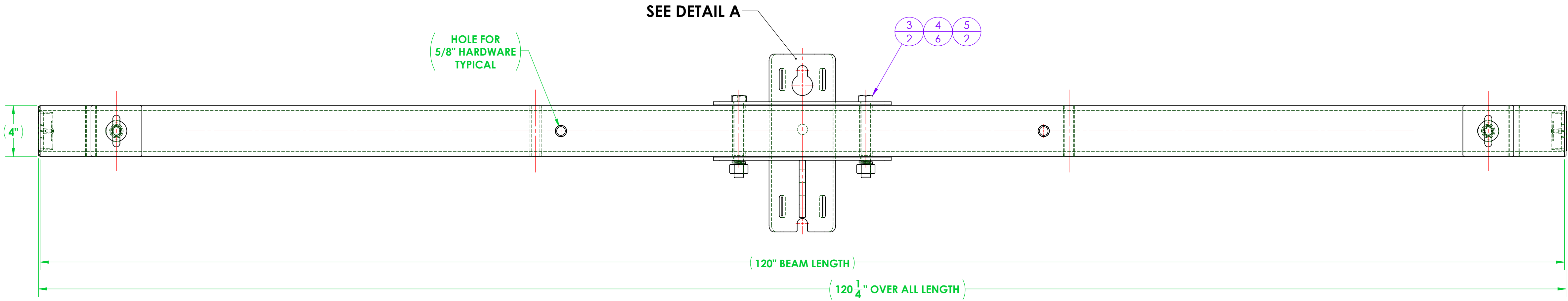


REVISIONS			
REV.	DESCRIPTION	DATE	APPROVED
-		-	



DETAIL A




ITEM NO.	PART NUMBER	DESCRIPTION	QTY.
1	A713-0002	WELDMENT, 3/4" HARDWARE MOUNTING BRACKET - DEADEND 4600 SERIES	1
2	4603A120-D312-2R10 CA	ASSEMBLY, DEADEND, 4603, (2) WIRE, 10 FT.	1
3	A616-0020-02	BOLT, HEX, 3/4"-10 X 6.00" LONG, HOT DIPPED GALVANIZED STEEL, 1-1/8" DRIVE	2
4	A616-0042-02	LOCK WASHER, FOR 5/8" SCREW, 0.641" ID, 1.073" OD, 0.156" THICK, HOT-DIPPED GALVANIZED STEEL	6
5	A616-0019-02	EXTREME STRENGTH NUT, HEX, 3/4"-10, 2H, HOT-DIPPED GALVANIZED	2
6	A711-0011	WASHER, SQUARE, 4.00" X 4.00" X 0.375 THICK	4
7	A616-0017-02	EYENUT, 5/8"-11, GALVANIZED STEEL	4
8	A711-0016	ALL-THREAD, 5/8"-11 X 9.00" LONG, GALV. STEEL	2

GENERAL NOTES

UNLESS OTHERWISE SPECIFIED	NAME	DATE
DIMENSIONS ARE IN INCHES	F. BRYANT	10/16/2025
STANDARD TOLERANCES		
FRACTIONAL: 1/32	CHECKED	
ANGULAR:	ENG APPR.	
MACHINED: ±0.5° BEND: ±2°	MFG APPR.	
TWO PLACE DECIMAL: ±0.03	Q.A.	
THREE PLACE DECIMAL: ±0.005		
INTERPRET GEOMETRIC TOLERANCING PER: ANSI Y14.5		
MATERIAL		
FINISH		
DO NOT SCALE DRAWING		

THE INFORMATION CONTAINED IN THIS DRAWING IS THE SOLE PROPERTY OF VELTURS. ANY REPRODUCTION IN PART OR AS A WHOLE WITHOUT THE WRITTEN PERMISSION OF VELTURS IS PROHIBITED.	PROPRIETARY AND CONFIDENTIAL
--	------------------------------

		
12208 MISSOURI BOTTOM ROAD, HAZELWOOD, MO 63042 PHONE: 314.714.4001 FAX: 314.873.1943 SALES@LABYRINTH-TECH.COM		
TITLE: ASSEMBLY, RUS, 4603, DEADEND, (2) WIRE, CROSSARM WITH GAIN, 10'		
SIZE	DWG. NO.	REV
D	4603A120-D312-2R10	-
SCALE: 1:8	WEIGHT: 122.73	SHEET 1 OF 1