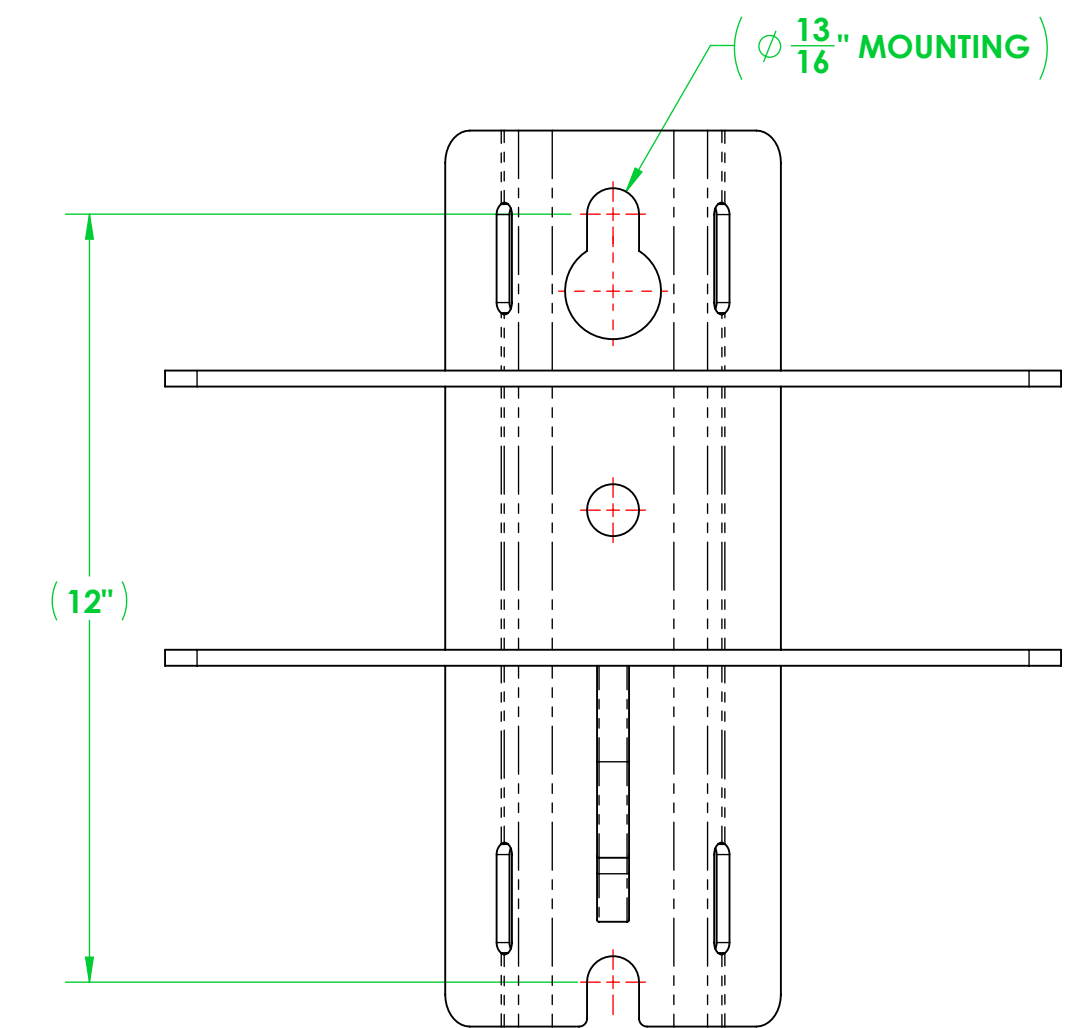
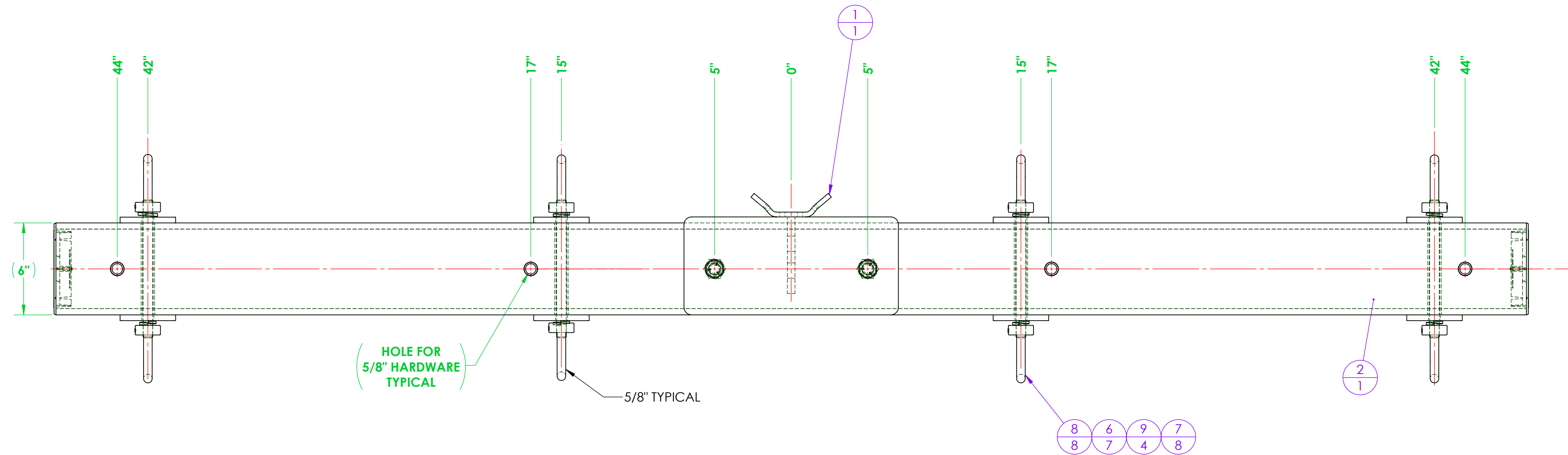
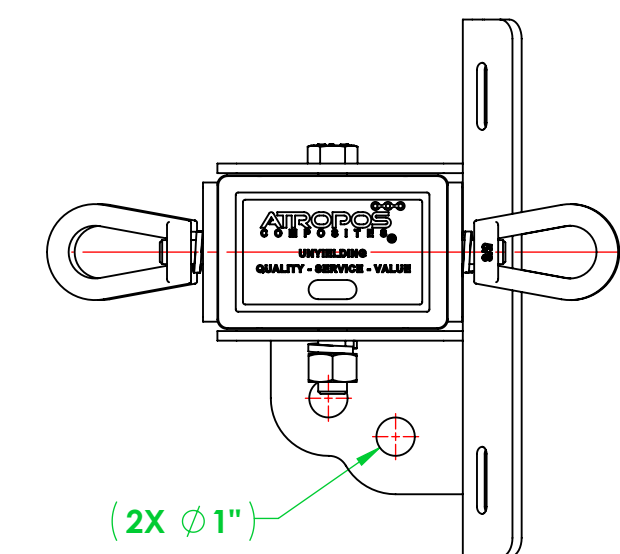
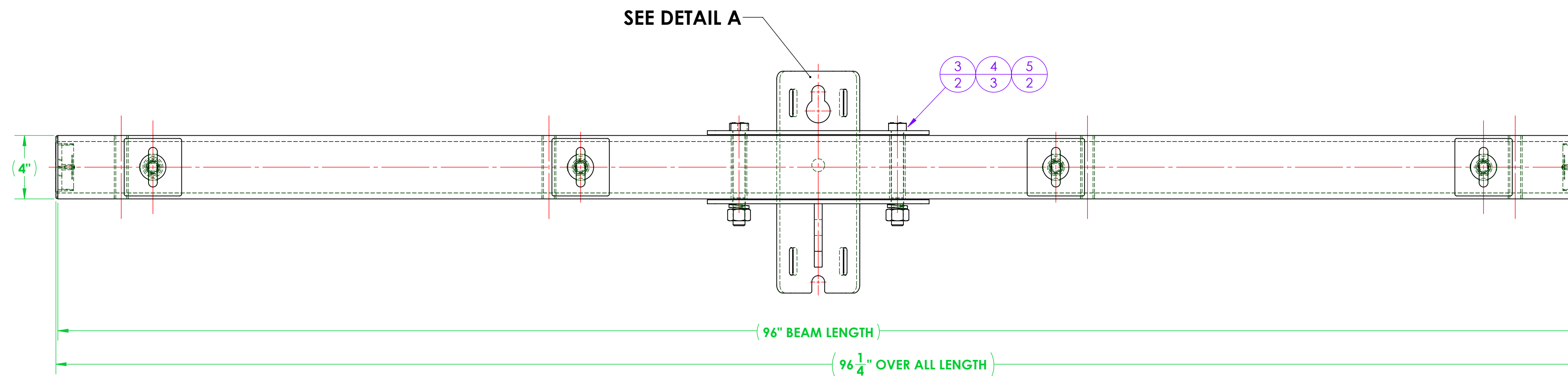



REVISIONS			
REV.	DESCRIPTION	DATE	APPROVED
-		-	



DETAIL A



ITEM NO.	PART NUMBER	DESCRIPTION	QTY
1	A713-0133	WELDMENT, 5/8" HARDWARE MOUNTING BRACKET, CROSSARM, DEADEND, 4600 SERIES	1
2	4603A096-D312-4R08 CA	ASSEMBLY, 4602 DEADEND CROSSARM, 8'	1
3	A616-0020-02	BOLT, HEX, 3/4"-10 X 6.00" LONG, HOT DIPPED GALVANIZED STEEL, 1-1/8" DRIVE	2
4	A616-0042-01	LOCK WASHER, FOR 3/4" SCREW, 0.766" ID, 1.265" OD, 0.188" THICK, HOT-DIPPED GALVANIZED STEEL	3
5	A616-0019-02	EXTREME STRENGTH NUT, HEX, 3/4"-10, 2H, HOT-DIPPED GALVANIZED	2
6	A616-0042-02	LOCK WASHER, FOR 5/8" SCREW, 0.641" ID, 1.073" OD, 0.156" THICK, HOT-DIPPED GALVANIZED STEEL	7
7	A711-0014	WASHER, SQUARE, 3.625" X 3.625" X 0.375 THICK	8
8	A616-0017-02	EYENUT, 5/8"-11, GALVANIZED STEEL	8
9	A711-0016	ALL-THREAD, 5/8"-11 X 9.00" LONG, GALV. STEEL	4

GENERAL NOTES	UNLESS OTHERWISE SPECIFIED		NAME	DATE	<div> ATROPOS COMPOSITES 12208 MISSOURI BOTTOM ROAD, HATELWOOD, MO 63042 PHONE: 314.714.4000 FAX: 314.895.1943 SALES@LABYRINTH-TECH.COM</div>		
	DIMENSIONS ARE IN INCHES		F. BRYANT	10/16/2025			
	STANDARD TOLERANCES		DRAWN				
	FRACTIONAL: ±1/32		CHECKED				
	ANGULAR: MACHINED: ±0.5° BEND: ±2°		ENG APPR.				
	TWO PLACE DECIMAL: ±0.03		MFG APPR.		TITLE: ASSEMBLY, RUS, 4603 DEADEND CROSSARM WITH GAIN, 8'	SIZE DWG. NO. D4603A096-D312-4R08	REV -
	THREE PLACE DECIMAL: ±0.005		G.A.				
	INTERFIT GEOMETRIC TOLERANCING PER: ANSI Y14.5						
	MATERIAL						
	FINISH						
DO NOT SCALE DRAWING		PROPRIETARY AND CONFIDENTIAL		THE INFORMATION CONTAINED IN THIS DRAWING IS THE SOLE PROPERTY OF VECTURUS. ANY REPRODUCTION IN PART OR AS A WHOLE WITHOUT THE WRITTEN PERMISSION OF VECTURUS IS PROHIBITED.			
				SCALE: 1:8 WEIGHT: 114.68 SHEET 1 OF 1			