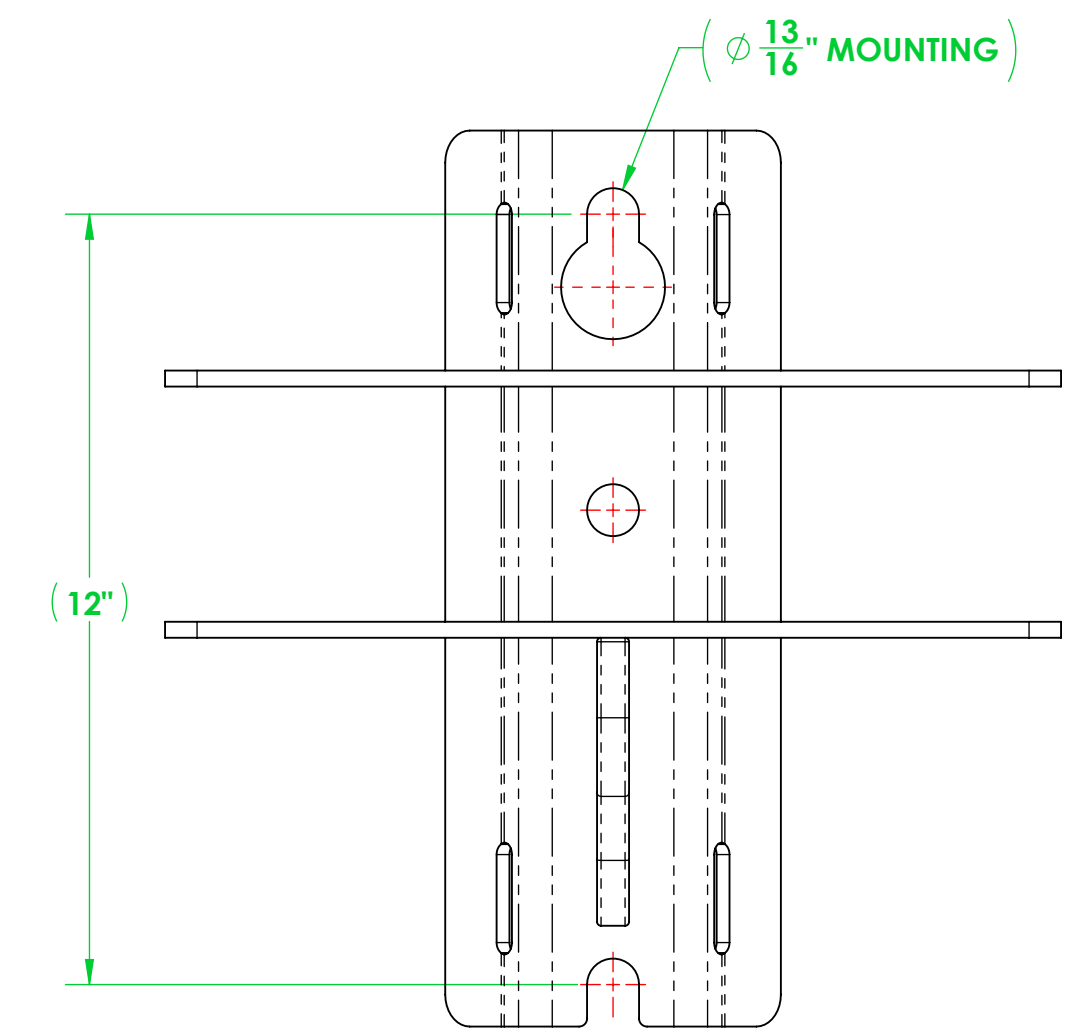
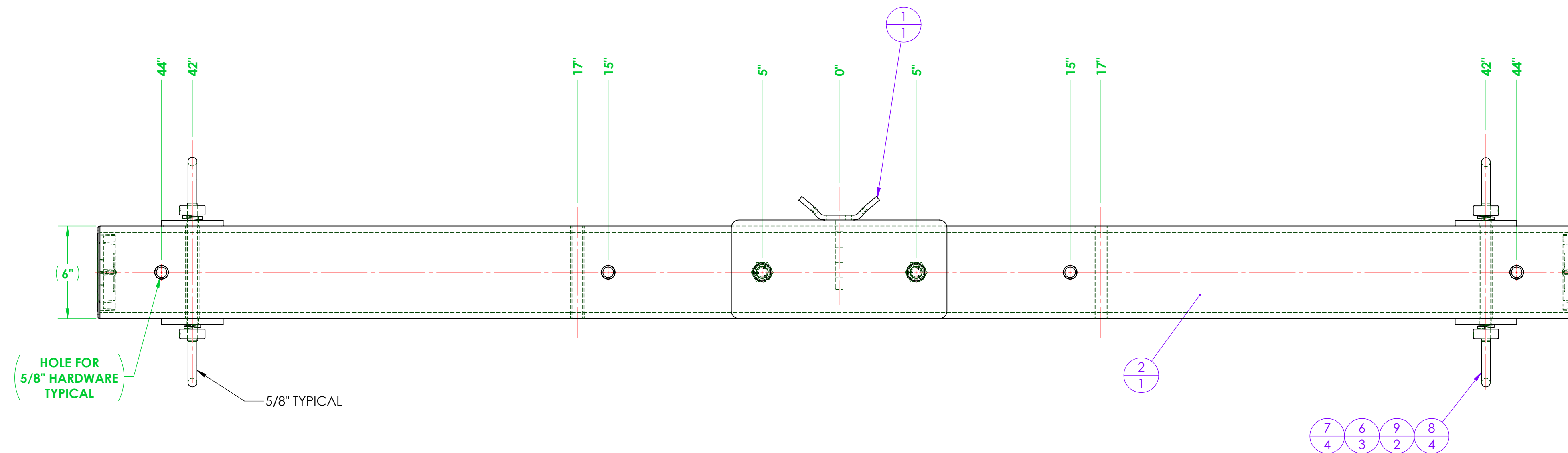
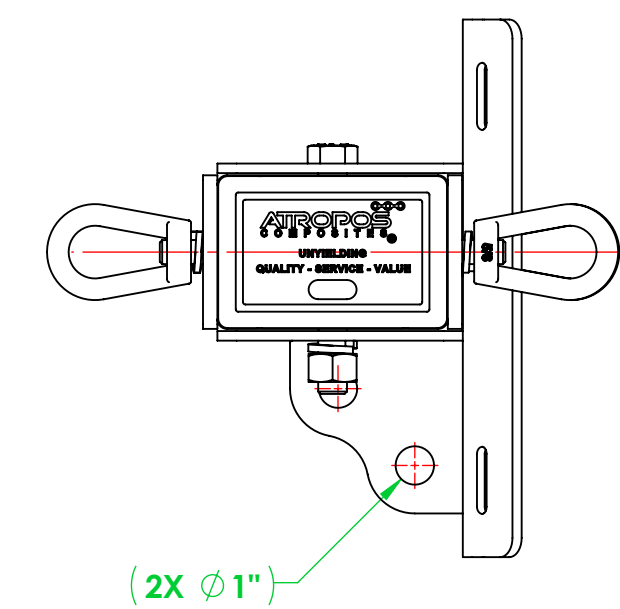
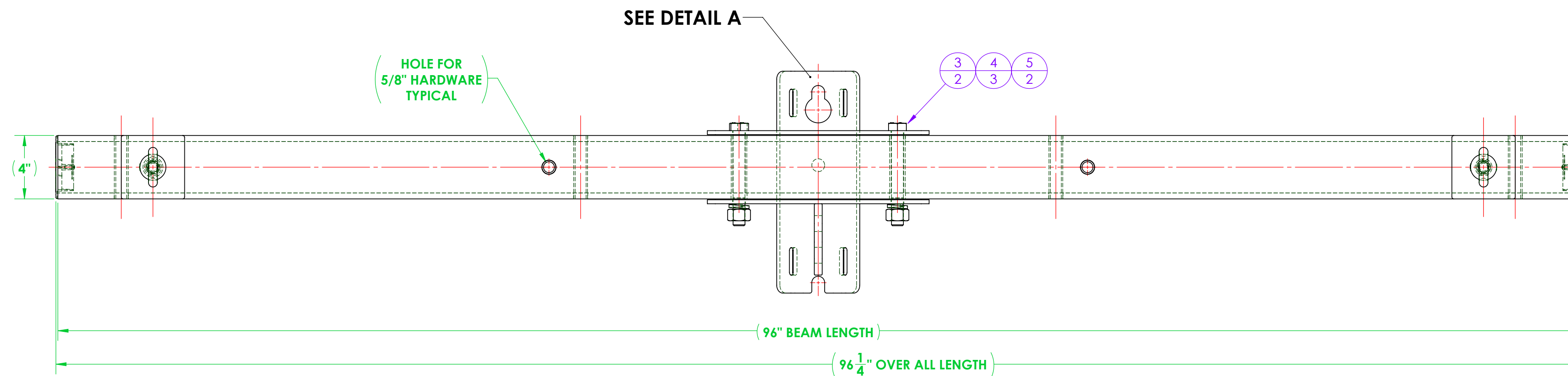


REVISIONS			
REV.	DESCRIPTION	DATE	APPROVED
-		-	

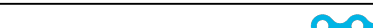


DETAIL A



ITEM NO.	PART NUMBER	DESCRIPTION	QTY
1	A713-0002	WELDMENT, 3/4" HARDWARE MOUNTING BRACKET - DEADEND 4600 SERIES	1
2	4603A096-D312-2R08 CA	ASSEMBLY, 4603 DEADEND CROSSARM, 8'	1
3	A616-0020-02	BOLT, HEX, 3/4"-10 X 6.00" LONG, HOT DIPPED GALVANIZED STEEL, 1-1/8" DRIVE	2
4	A616-0042-01	LOCK WASHER, FOR 3/4" SCREW, 0.766" ID, 1.265" OD, 0.188" THICK, HOT-DIPPED GALVANIZED STEEL	3
5	A616-0019-02	EXTREME STRENGTH NUT, HEX, 3/4"-10, 2H, HOT-DIPPED GALVANIZED	2
6	A616-0042-02	LOCK WASHER, FOR 5/8" SCREW, 0.641" ID, 1.073" OD, 0.156" THICK, HOT-DIPPED GALVANIZED STEEL	3
7	A711-0011	WASHER, SQUARE, 4.00" X 4.00" X 0.375 THICK	4
8	A616-0017-02	EYENUT, 5/8"-11, GALVANIZED STEEL	4
9	A711-0016	ALL-THREAD, 5/8"-11 X 9.00" LONG, GALV. STEEL	2

GENERAL NOTES	UNLESS OTHERWISE SPECIFIED		NAME		DATE	
	DIMENSIONS ARE IN INCHES		DRAWN		F. BRYANT	
	STANDARD TOLERANCES		CHECKED		10/16/2025	
	FRACTIONAL: ±1/32		ENG APPR.		-	
	ANGULAR: MACHINED +0.5° BEND: -2°		MFG APPR.		-	
	TWO PLACE DECIMAL: ±0.03		G.A.		-	
	THREE PLACE DECIMAL: ±0.005		INTERFIT GEOMETRIC TOLERANCING PER: ANSI Y14.5		TITLE:	
	MATERIAL		PROPRIETARY AND CONFIDENTIAL		ASSEMBLY, RUS, 4603, DEADEND, (2) WIRE, CROSSARM WITH GAIN, 8'	
	FINISH		THE INFORMATION CONTAINED IN THIS DRAWING IS THE SOLE PROPERTY OF VELTURS. ANY REPRODUCTION IN PART OR AS A WHOLE WITHOUT THE WRITTEN PERMISSION OF VELTURS IS PROHIBITED.		SIZE DWG. NO.	
	DO NOT SCALE DRAWING				D 4603A096-D312-2R08	
				SCALE: 1/8" WEIGHT: 105.36		
				REV -		
				SHEET 1 OF 1		



12208 MISSOURI BOTTOM ROAD, HAZELWOOD, MO 63042
PHONE: 314.714.1414 FAX: 314.985.1943
SALES@ALBYRINTH-TECH.COM